

Installation Guide and Users Manual

WINDSTERTM

UNDER CABINET KITCHEN HOOD

(For Model RH-U)

IMPORTANT:

Read and save these instructions.

NOTICE:

Installer: Leave this guide with the homeowner

Homeowner: Keep this guide for future reference



Table of Contents

A. Important Safety Instructions	P.01
- Installation.....	P.01
- Operations.....	P.01
- Cleaning.....	P.01
B. Before You Start	P.02
C. Electrical Requirements	P.04
D. List of Materials	P.05
E. Planning for the Instruction	P.06
- A. Must measure following steps before installation	P.06
- B. Test the Product	P.06
- C. Venting Methods	P.06
F. Installation Instructions	P.08
G. Specification	P.09
H. Maintenance	P.10
I. Troubleshooting	P.11
J. Range Hood Operations	P.12
K. Measurements of Range Hood	P.12

READ AND SAVE THESE INSTRUCTIONS
SAVE THIS GUIDE FOR THE LOCAL ELECTRICAL INSPECTOR's USE
APPROVED FOR RESIDENTIAL APPLIANCES
FOR RESIDENTIAL USE ONLY

* INSTALLATION MUST COMPLY WITH ALL LOCAL CODES.

* Requirement: 120V AC, 60Hz. 15 or 20 A Branch Circuit

* Must read the entire instructions before any proceeding.

* Turn off power circuit at service panel and lock out panel, before wiring this appliance.

INSTALLER: Must leave these instructions with this unit for the owner.

HOMEOWNER: Please retain these instructions for future reference and for local electrical inspectors' use.

A. IMPORTANT SAFETY INSTRUCTIONS

Read all Instructions before Installing and operating this appliance.

Installation

Do not install when you found the out looking / appearance of this appliance already damaged.

1. The installation in this manual is intended for qualified installers, service technicians or persons with similar qualified background. **NEVER** attempt to install this appliance yourself.
2. Injury could result from installing the unit due to lack of appropriate electrical and technical background.
3. All electrical wiring must be properly installed, insulated and grounded. Old duct work should be cleaned or replaced if necessary to avoid the possibility of a grease fire. Check all joints on duct work to insure proper connection and all joints should be properly taped.
4. **Personal injury Hazard** -Because of the weight and size of the range hood, two or more people are needed to move and safely install the range hood. Failure to properly lift range hood could result in damage to the product or person injury.
5. **SEVERE INJURY** - Range hood may have very sharp edges. Please wear protective gloves if it is necessary to remove any parts for installing, cleaning or servicing.

Operations

1. Read all instructions in this manual before operating the appliance. Save these instructions for future reference.
2. Always leave safety grills and filters in place. Without these components, operating blowers could catch on to hair, fingers and loose clothing
3. **NEVER** dispose cigarette ashes, ignitable substances, or any foreign objects into blowers.
4. **NEVER** leave cooking unattended. When frying, oil in the pan can easily overheat and catch fire. The risk of self combustion is higher when the oil has been used several times.
5. **NEVER** cook on "open" flames under the range hood. Check deep-fryers during use: superheated oil may be flammable.

Cleaning

DO NOT OPERATE BLOWERS WHEN FILTERS ARE REMOVED.

1. The saturation of greasy residue in the blower and filters may cause increased inflammability. Keep this appliance clean and free of grease and residue build-up at all times to prevent possible fires.
2. Filters must be cleaned periodically and free from accumulation of cooking residue (see cleaning instructions inside). Old and worn filters must be replaced immediately.
3. **NEVER** disassemble parts to clean without proper instructions. Disassembly is recommended to be performed by qualified personnel only. Call our service center for removal instructions.
4. **DO NOT** screw off the screws on the buffer filter of RH-659 for cleaning, as may cause injury for the sharp areas inside the filter.

The manufacture and distributors decline all responsibility in the event of failure to observe the instructions given here for installation, maintenance and suitable use of the product.

The manufacture and distributors further declines all responsibility for injury due to negligence and the warranty of the unit automatically expires due to improper maintenance.

B. BEFORE YOU START...

It is very important for your safety and safety of others. Provided following are many important safety messages in this manual and on your appliance. Always read and obey all safety messages. All safety messages will tell you what the potential hazard is, tell you how to reduce the chance of injury, and tell you what can happen if the instructions are not followed.



This is the safety alert symbol.

This symbol alerts you to potential hazards that can kill or hurt you and others. All safety messages will follow the safety alert symbol and the word "**WARNING**".

READ AND SAVE THESE INSTRUCTIONS

WARNING :

TO REDUCE THE RISK OF FIRE, ELECTRIC SHOCK, OR INJURY TO PERSON OBSERVE THE FOLLOWING CAREFULLY:

- 1) Use this unit only in the manner intended by the manufacturer. If you have any questions, contact the distributor, importer or the manufacturer please.
- 2) Before servicing or cleaning unit, switch power off at service panel and lock service disconnecting means to prevent power from being switched on accidentally. When the service disconnecting means cannot be locked, securely fasten a prominent warning device, such as a tag, to the service panel.
- 3) Installation work and electrical wiring must be done by qualified person(s) in accordance with all applicable codes and standards, including fire-related construction.
- 4) Sufficient air is needed for proper combustion and exhausting of gases through the flue (Duct cover) of fuel burning equipment to prevent back drafting. Follow the heating equipment manufacturer's guideline and safety standards such as those published by the National Fire Protection Association (NFPA), and the American Society for Heating, Refrigeration and Air Conditioning Engineers (ASHRAE), and the local code authorities.
- 5) When cutting or drilling into the wall or ceiling, do not damage electrical wiring and hidden utilities.
- 6) Dusted fans must always be vented to the outdoors.

WARNING :

TO REDUCE THE RISK OF FIRE, USE ONLY METAL DUCT WORK.

CAUTION :

FOR GENERAL VENTILATING USE ONLY. DO NOT USE THE EXHAUST HAZARDOUS OR EXPLOSIVE MATERIALS OR VAPORS.

WARNING :

TO REDUCE THE RISK OF INJURY TO PERSONS IN THE EVENT OF A RANGE TOP GREASE FIRE, OBSERVE THE FOLLOWING: (Based in "Kitchen Firesafety Tips" published by NFPA)

- 1) **SMOTHER FLAMES** with a close-fitting lid, cookie sheet, or metal tray, then turn off the burner. **BE CAREFUL TO PREVENT BURNS.** If the flames do not go out immediately, **EVACUATE AND CALL THE FIRE DEPARTMENT.**
- 2) **NEVER PICK UP A FLAMING PAN** - you may be burned.
- 3) **DO NOT USE WATER**, including wet dishcloths or towels - a violent steam explosion will result.
- 4) Use an extinguisher **ONLY** if:
 - a) You know you have a class ABC extinguisher, and you already know how to operate it.
 - b) The fire is small and contained in the area where it started.
 - c) The fire department is being called.
 - d) You can fight the fire with your back to an exit.

CAUTION :

TO REDUCE RISK OF FIRE AND TO PROPERLY EXHAUST AIR, BE SURE TO DUCT AIR OUTSIDE - DO NOT VENT EXHAUST AIR INTO SPACES WITHIN WALLS, CEILINGS, ATTICS, CRAWL SPACES, OR GARAGES.

WARNING :

TO REDUCE THE RISK OF FIRE OR ELECTRIC SHOCK, DO NOT USE THIS HOOD WITH ANY EXTERNAL SOLID STATE SPEED CONTROL DEVICE.

WARNING

TO REDUCE THE RISK OF A RANGE TOP GREASE FIRE

- 1) Never leave surface units unattended at high settings. Boil over cause smoking spillovers that may ignite. Heat oils slowly on low or medium settings.
- 2) Always turn hood on when cooking at high heat or when cooking flaming foods.
(i.e. Crepes Suzette, Cherries Jubilee, Peppercorn Beef Flame).
- 3) Clean ventilating fans frequently. Grease should not be allowed to accumulate on fan or filter.
- 4) Use proper pan size. Always use cookware appropriate for the size of the surface element.

WARNING:

TO REDUCE THE RISK OF FIRE, ELECTRIC SHOCK, OR INJURY TO PERSONS, OBSERVE THE FOLLOWING:

- 1) Use this unit only in the manner intended by the manufacture. If you have questions, contact the manufacturer.
- 2) Before servicing or cleaning unit, switch power off at service panel and lock switch power off at service panel and lock service panel to prevent power from being switched on accidentally.
- 3) When the service disconnecting means cannot be blocked, securely fasten prominent warning device such as a tag to the service panel.

WARNING:

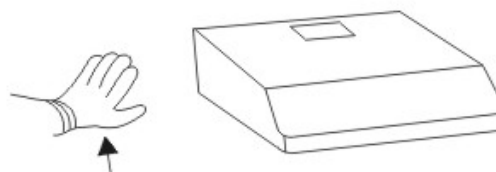
TO REDUCE THE RISK OF A RANGE TOP GREASE FIRE:

- 1) Never leave surface units unattended at high setting.
- 2) Boil overs cause smoking and greasy spillovers that may ignite.
- 3) Heat oils slowly on low or medium setting.
- 4) Always turn hood ON when cooking at high heat or when cooking flaming foods.
- 5) Clean ventilating fans frequently.
- 6) Grease should not be allowed to accumulate on fan or filter.
- 7) Use proper pan size.
- 8) Always use cookware appropriate for the size of the surface element.

WARNING- TO REDUCE THE RISK OF INJURY TO PERSONS IN THE EVENT OF A RANGE TOP GREASE FIRE, OBSERVE THE FOLLOWING:

- a) SMOTHER FLAMES with a close-fitting lid, cookie sheet, or metal tray, then turn off the burner.
- b) BE CAREFUL TO PREVENT BURNS. If the flames do not go out immediately, EVACUATE AND CALL THE FIRE DEPARTMENT.
- c) NEVER PICK UP A FLAMING PAN - you may be burned.
- d) DO NOT USE WATER, including wet dishcloths or towels - a violent steam explosion will result.
- e) Use an extinguisher ONLY if:
 - You know you have a Class ABC extinguisher, and you already know how to operate it.
 - The fire is small and contained in the area where it is started.
 - The fire department is being called. You can fight the fire with your back to an exit.
- f) To get the best performance, the vertical clearance between the cook-top and the range hood should range from 28" to 32"

PLEASE WEAR "SAFETY WORKMAN GLOVES" FOR INSTALLATION, CLEANING, LIGHT BULB CHANGING AND DISMANTLING TO REDUCE THE RISK OF ANY BODILY INJURIES.



Safety Workman Gloves

C. ELECTRICAL REQUIREMENTS

OBSERVE ALL GOVERNING CODES AND ORDINANCES

⚠ WARNING

- * Electrical ground is required on this range hood.
- * Check with a qualified electrician if you are not sure whether the range hood is properly grounded.
- * Failure to follow electrical requirements may result in a fire.
- * A fuse in the neutral or grounding circuit could result in electrical shock.
- * If cold water pipe is interrupted by plastic nonmetallic gaskets or other materials, DO NOT use for grounding.
- ** DO NOT have a fuse in the neutral or grounding circuit.
- ** DO NOT ground to a gas pipe.

IMPORTANT:

It is customer's responsibility to contact a qualified electrical installer and assure that the electrical installation is adequate and in conformance with National Electrical Code, or CSA standards and all local codes and ordinances.

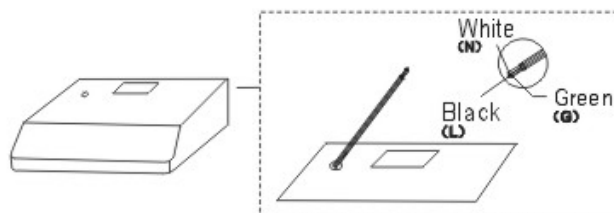
- A. Save installation instructions for electrical inspector's use.
- B. If codes permit and a separate ground wire is used, it is recommended that a qualified electrician determines that if the ground path is adequate.
- C. Please remove the house fuse or open circuit before any installation for personal safety. DO NOT use extension code or adapter plug with this appliance.
- D. RISK OF ELECTRICAL SHOCK - This range hood must be properly grounded.
- E. The range hood must be connected with copper wire only.
- F. The range hood should be connected directly to the fused disconnect (or circuit breaker) box through flexible, armored or nonmetallic sheathed copper cable. Allow some slack in the cable so the appliance can be moved if servicing is ever necessary.
- G. A UL or C.S.A. listed conduit connector must be provided at each end of the power supply cable (at the range hood and at the junction box).
- H. When making the electrical connection, cut a 1-1/4" hole in the wall. A hole cut through wood must be sanded until smooth. A hole through metal must have a grommet.
- I. When cutting or drilling into wall or ceiling, do not damage electrical wiring and other hidden utilities.
- J. Wire sizes must conform to the requirements of the National Electrical Code ANSI/NFPA 70 - latest edition*, or CSA Standards C22.1-94, Canadian Electrical Code Part 1 and C22.2 No. 0-M91 - latest edition** and all local codes and ordinances.
- K. Connect three wires according to color (Black to Black, White to White, and Green to Green) to house wires and cap with wire connectors.

⚠ WARNING



HAZARD OF ELECTRICAL SHOCK!

Do not perform service on an electrically live system. Disconnect the main electrical supply before servicing this device. Touching electrical connectors or other exposed electrical circuitry inside this range hood when they are energized could result in death, serious bodily injury, or property damage.



BLACK TO BLACK (Hot)
WHITE TO WHITE (Neutral)
GREEN TO GREEN (Ground)

* National Fire Protection Association Batterymarch Park Quincy, Massachusetts 02269

** CSA International 8501 East Pleasant Valley Road Cleveland, Ohio 44131-5575

D. LIST OF MATERIALS

TOOLS FOR INSTALLATION:



level



Measuring tape



Utility Knife



Powered screwdriver or drill



Marker or pencil



Certified Silver Tape or Duct Tape



Adjustable wrench

Flat-blade screwdrivers

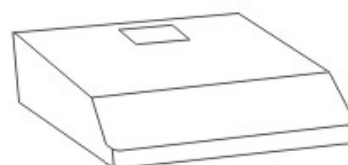


Philips screwdrivers

PARTS SUPPLIED:

(For Returns or Refunds must keep all materials)

Description		Quantity
Main body (Body of Hood)		1 Set
Baffle Filter - 3 pieces		1 Ctn
Oil Collector		1 Pcs
Screws Box	Duct Set (include O-ring)	1 Set
	Φ 3/16" x 5/8" Screw with Flat Washer	4 Sets
	Φ 5/32" x 5/8" Screw	6 Pcs
	Φ 7/16" x 1" Tapping Screw & Washer	8 Pcs
	Body Hook	2 Pcs
	Installation Guide & Warranty Instruction	1 Set



Range Hood
(vary with model)
1set



Baffle filter(s)
Size: 15-3/4" x 9-1/16"
3 pcs



Screws box



Oil Collector 1pc



Installation Guide



Duct Set
(include o-ring)



Φ 3/16" x 5/8"
Screw & Washer
4 sets



Body Hook
2 pcs



Φ 5/32" x 5/8"
screws 6pcs



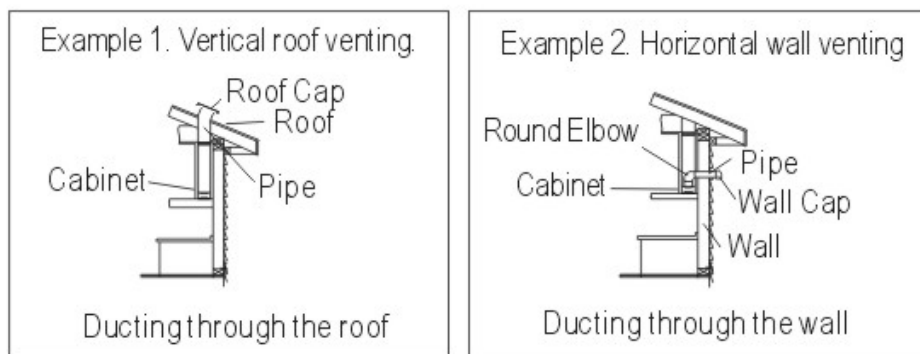
Φ 7/16" x 1"
Tapping Screw & Washer
8pcs

NOTICE:

1. Remove the range hood from the carton packaging and place on a flat surface for assembly.
2. Check carefully to make sure that no mounting hardware or parts are missing.

IMPORTANT:

- Vent system must terminate to the outside(through roof or side wall),
- Do not terminate the vent system in an attic or any other enclosed area.
- Recommended to use metal / flexible aluminum vent only.
- Never use plastic vent.
- Always Keep the duct clean to ensure the proper airflow.
- NEVER exhaust air or terminate duct work into spaces between walls, crawl spaces, ceiling, attics or garages. All exhaust must be ducted to the outside.
- Use caulking to seal exterior wall or roof opening around the cap.
- Do not use 4" (10.2cm) laundry-type wall caps.
- Always keep the duct clean to ensure proper airflow.
- It is recommended that the range hood be vented vertically through the roof through 6" (15cm) round metal/ aluminum vent work. The size of the vent should be uniform.
- Use no more than three 90° elbows and do not install two elbows together.
- Use duct tape to seal all joints in the vent system.
- The vent system must have a damper. If roof or wall cap has a damper, Do Not use damper supplied with the range hood.
- Fasten all connections with sheet metal screws and tape all joints with certified Silver Tape or Duct Tape.
- Make sure there is a minium of 24" of straight vent between the elbows if more than one elbow is sed. The length of vent system and number of elbows should be kept to a minimum to provide efficient performance.



Calculate the duct run length:

If ducted with the required minimum of 6" round duct work, the duct run should not exceed 35 equivalent feet. Calculate the length of the duct work by adding the equivalent feet as below for each piece of duct in the system.

1. Use no more than three 90° Elbow.
2. Make sure that there is a minimum of 24" of straight duct between elbows if more then one is used.
3. DO NOT install two elbows together.
4. If you must elbow right away, do it as far away from the hood's exhaust opening as possible.

45° Elbow	- 3.0 feet	9 Feet Straight Duct	9.0 feet
90° Elbow	- 5.0 feet	2-90° Elbow	10.0 feet
90° Flat Elbow	- 12.0 feet	Wall Cap	0.0 feet
Wall Cap	- 0.0 feet	Total System	19.0 feet

E. PLANNING FOR THE INSTALLATION

⚠ WARNING

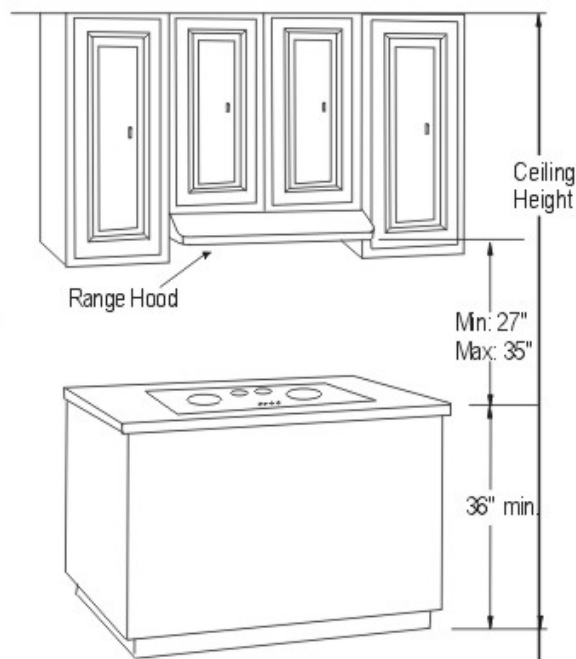
- * **Proper installation is your responsibility** - Must have a qualified technical to install this range hood.
- * Read the entire installation guide and users manual thoroughly, and understand instructions and warning.
- * **PERSONAL INJURY HAZARD** - Because of the weight and size of the range hood, two or more people are needed to move and safely install the range hood. Failure to properly lift range hood could result in damage to the product or person injury.
- * All opening in ceiling and wall where range hood will be installed must be sealed.
- * Range hood location should be away from strong draft areas (windows, doors and strong heating vents).
- * **SEVERE INJURY** - Rotating fan can cause severe injury. Stay clear of fan when motor is running.
- * **SEVERE INJURY** - Range hood may have very sharp edges. Please wear protective gloves if it is necessary to remove any parts for installing, cleaning or servicing.
- * Must be very careful when using electrical screwdriver as damage to the hood may occur.

A. IMPORTANT: MUST MEASURE FOLLOWING STEPS BEFORE INSTALLATION.

This product is designed for Under the cabinet installation.

Must avoid the debris entering into the vent opening to avoid damage to your range hood.

- 1) Distance from the floor to the ceiling.
- 2) Distance between the floor to the counter top/stove (standard: 36").
- 3) Distance between the counter/stove and range hood (recommended 27" to 35").
- 4) Height of Cabinet
- 5) Measure and create access opening for electrical wires and the duct sets under the cabinet. (**Refer to the "Cut off Area" in Section J for Measurement of Range Hood)
- 6) Height of the range hood installation.



B. TEST THE PRODUCT

Before installing, temporarily wire the hood to test for proper operation. If the hood is not working properly, do not continue the installing.

C. VENTING METHODS

Outdoor Venting methods (for outdoor venting through the roof or wall only)

WARNING: BEFORE MAKING ANY CUTS OR HOLES FOR INSTALLATION, DETERMINE WHICH VENTING METHOD WILL BE USED AND CAREFULLY CALCULATE ALL MEASUREMENTS.

* **To perform the hood more efficiently, a straight and short venting run is suggested.**

The hood is equipped with a transition "duct set" for discharge of fumes to the outdoor. Vent work can terminate either through the roof or wall. To vent through a wall, a 90 degree elbow is used.

F. INSTALLATION INSTRUCTIONS

*** **Must read the instructions carefully before any installation.**

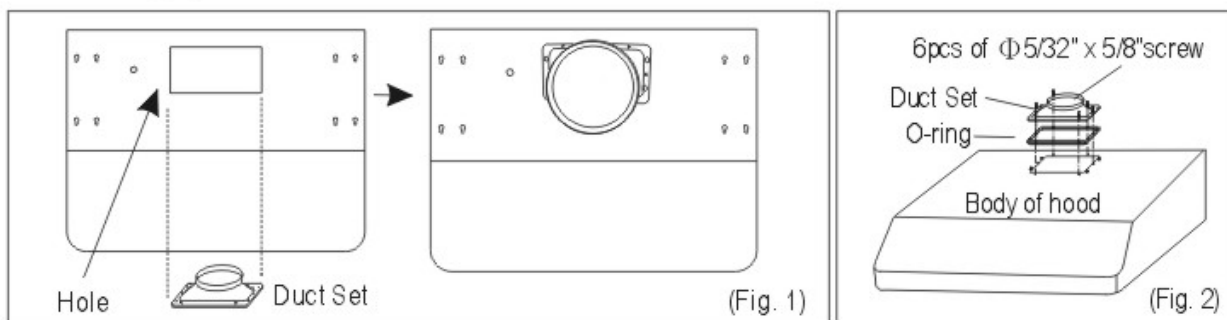
- Before making cutouts, make sure there is proper clearance within the ceiling or wall for exhaust vent.
- Check your ceiling height and the hood height maximum before you select and install your hood. The hood installation height above cooktop is users preference. The lower the hood above the cooktop the more efficient the capturing of cooking odors, grease and smoke. The hood shall be installed at 27" minimum to 35" above the counter top.
- Fitting material is provided to secure the hood to most types of walls. However, a qualified technician must verify suitability of the materials in accordance with the type of wall. Must consult a qualified installer and check if the screws and drywall anchor perfectly fit with your cabin/wall.
- The manufacturer assumes no responsibility for injury or damage caused by improper installations.
- Put a thick, protective covering over counter top, cook top or range to protect from damage or dirt. Remove any hazardous objects around the area when installing.
- DO NOT screw off the screws on the buffer filter, as may cause injury for the sharp areas inside the filter.

⚠ WARNING

PERSONAL INJURY HAZARD

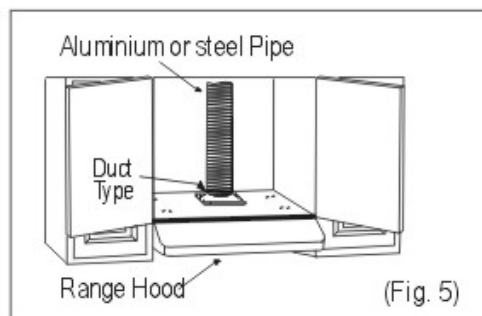
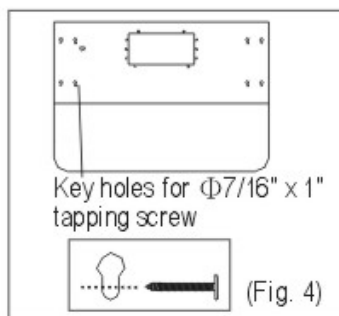
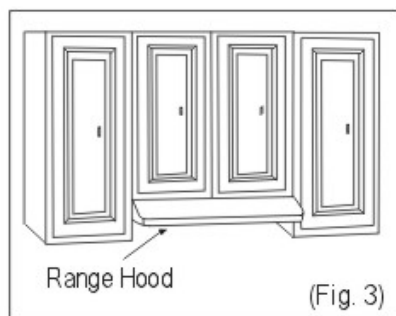
- * If there is a cooking range under the install of hood, must turn off its power on an electrical range at the main electrical box. Must shut off the gas if is a gas range.
- * Because of the weight and size of the range hood, two or more people are needed to move and safely install the range hood. Failure to properly lift range hood could result in damage to the product or personal injury.
- * Hood may have very sharp edges. Please wear protective gloves if it is necessary to remove any parts for installing.

1. Install the duct set by using six $\Phi 5.32" \times 5/8"$ screws (see figure 1 & 2). Make sure the duct set face the right position when install it.



2. Using the information on "Section J for Measurement of Range Hood" center the hood in place beneath the cabinet and flush with the front of the cabinet (figure 3).
3. Through cabinet access opening, draw electrical wires.
4. Install the hood onto the cabinet and place the 8 sets of $\Phi 7/16" \times 1"$ Tapping Screw & Washer into the exact center of each key hole. Make sure all screws are in place before tightening screws (figure 4).

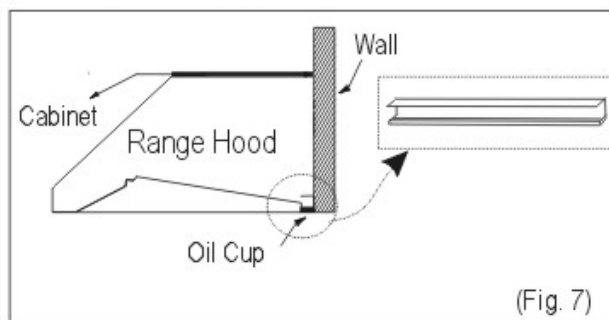
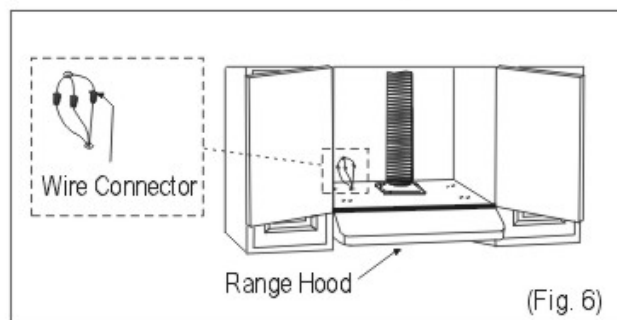
CAUTION: MAKE SURE THE RANGE HOOD IS SECURE BEFORE RELEASING AND THE CABINET CAN UNDERTAKE THE WEIGHT OF THE HOOD!



5. Connect the aluminum or steel pipe onto the duct set on the hood. Use duct tape to make all joints secure and air tight. (Figure 5)
6. To convert duct work to 7" round, attached 7" round adapter (optional) to the original duct set.
7. Connect the electrical wires (figure 6).
(Must read and understand section C for electrical requirements, before doing any electrical works)). Make sure wires do not slip between motor or any moving parts to prevent any damage.

WARNING: RISK OF ELECTRICAL SHOCK. MAKE SURE THIS RANGE HOOD MUST BE PROPERLY GROUNDED BY SPECIALIZED ELECTRICIAN IN ACCORDANCE WITH ALL APPLICABLE NATIONAL AND LOCAL ELECTRICAL CODE. BEFORE CONNECTING WIRES, SWITCH POWER OFF AT SERVICE PANEL AND LOCK SERVICE PANEL TO PREVENT POWER FROM BEING SWITCHED ON ACCIDENTALLY.

8. Took the baffle filters off and place the oil collector into position (figure 7)..



9. Turn the power on and check all lights and fan operation. Make sure this manual is been preserve properly.

G. SPECIFICATIONS

Power Rating	120V/60Hz (USA & Canada standard)
General Input Power	200 W (160W + 2 x 20W)
Motor Input Power	160W
Motor Revolution	1400 R.P.M. ($\pm 10\%$)
Air Pressure	560 Pa
Noise Level (dB)	Approximately 55 to 59 (Lowest to highest Speed)
Motor Type	Single motor
Fan Type	Sirocco
Illumination	20W * 2 (Halogen)

* specifications are subject to change without any prior notice.

H. MAINTENANCE

Prior to any maintenance operation ensure that the range hood is disconnected from the power supply.

Cleaning Hood Surface

- The range hood should be cleaned regularly internally & externally in order to preserve its fine appearance.
- Clean periodically with hot soapy water and clean cotton cloth. Do not use corrosive or abrasive detergent (e.g. Comet Power Scrub®, EZ-off® oven cleaner), or steel wool/scoring pads, which will scratch and damage the stainless steel surface.
- For heavier soil use liquid degrease such as "Formula 409®" or "Fantastik®" brand cleaner.
- After cleaning, you may use non abrasive stainless steel polish/cleaner such as 3M® or ZEP® to polish and buff out the stainless luster and grain. Always scrub lightly, with clean cotton cloth, and with the grain. Small bits of steel may adhere to the surface causing rust.
- DO NOT allow deposits to remain for long periods of time.
- DO NOT allow cleaning compounds, salt solutions, disinfectants or bleaches to remain in contact with product for extended periods. Many of these compounds contain chemicals, which may be harmful. Rinse with water after exposure and wipe dry with a clean cloth.

Cleaning Baffle filters & Oil Collector

- Must be very careful and gentle when cleaning the baffle filters, as may cause personal injury.
- DO NOT screw off the screws on the buffer filter of RH-659 for cleaning, as may cause injury for the sharp areas inside the filter.
- The metal filters fitted by the factory are intended to filter out residue and grease from cooking. It need not be replaced on a regular basis but are required to be kept clean.
- This must be cleaned once a month using non aggressive detergents, either by hand or in the dish-washer, which must be set to a low temperature and a short cycle.
- When washed in a dish washer, the grease filter may discolour slightly, but this does not affect its filtering capacity.
- Dry filters and re-install before using hood.

WARNING

FAILURE TO CARRY OUT THE BASIC STANDARDS OF CLEANING OF THE RANGE HOOD AND REPLACEMENT OF THE FILTERS MAY CAUSE FIRE RISKS. THEREFORE WE RECOMMEND OBSERVING THESE INSTRUCTIONS.

⚠ WARNING

BURNS HAZARD

Light bulb become extremely hot when turned on. DO NOT touch bulb until switched off and cooled. Touching hot bulbs could cause serious burns.

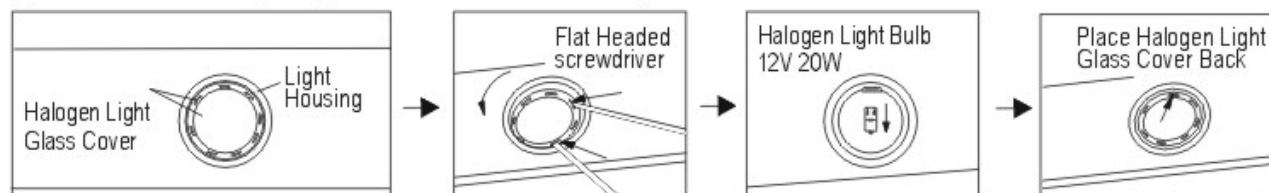
SEVERE INJURY

Rotating fan can cause severe injury. Stay clear of fan when motor is running.

Replacing the light bulb

WARNING: Disconnect the hood from electricity and be sure the lights are cool.

- Should the light bulb burned out due to age or prolonged use, replace with 20W 12V halogen bulb.
 - If new lights do not operate, make sure the light bulb is inserted correctly.
- (1) Turn off the range hood.
 - (2) **Make sure the lights are cool to touch**, use a flat hand screwdriver or equivalent tool carefully turn the inner ring counter-clockwise to pop out the protective covering of the light.
 - (3) Gently pull out the defective bulb and discard accordingly.
 - (4) Install a new halogen light bulb and reverse the steps.



I. TROUBLESHOOTING

⚠ WARNING



HAZARD OF ELECTRICAL SHOCK!

Do not perform service on an electrically live system. Disconnect the main electrical supply before servicing this device. Touching electrical connectors or other exposed electrical circuitry inside this range hood when they are energized could result in death, serious bodily injury, or property damage.

1. If the range hood does not operate after installation:

- Check if the range hood has been plugged in, make sure that all power has been turned back on and all electrical wiring are properly connected.
- Check the power connection with the unit is connected properly.
- Make sure the wiring between the switch board and control board are connected properly.

2. The range hood vibrates when the blower is on:

- The range hood might not have been secured properly on to the wall.
- Check weather the motor is secured in place, If not, then tighten the motor in place.
- Check weather there is a damaged blower wheel, if so change the blower wheel.

3. The blowers seems weak:

- Check that the duct sized used is at least 6" or 3-1/4 x 10". Range hood WILL NOT function efficiently with insufficient duct size. For example: 7" duct cover 6" holes and loosely secured.
- Check if duct is clogged or if damper unit is not opening properly. A tight mesh on a side wall cap unit might also cause restriction to the air flow.

4. The lights work but the blower is not spinning at all, is stuck or is rattling:

- The blower might be jammed or scraping the bottom due to shipping damage.
- The motor is defective, possible seized - change the motor.
- The thermally protected system detects if the motor is too hot to operate and shuts the motor down. In this case the motor will function properly after the thermally protected system cool down.

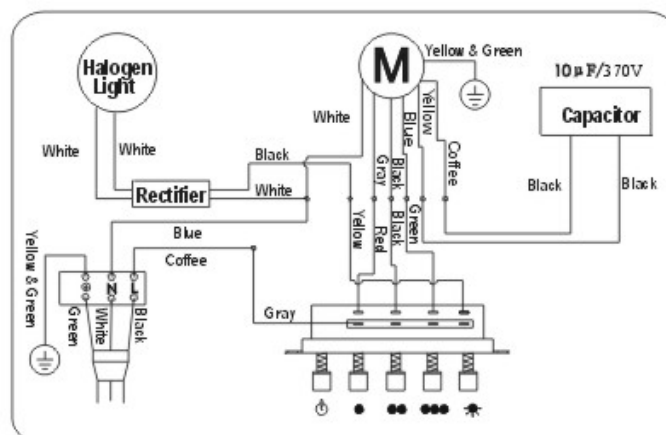
5. The hood is not venting out properly:

- Make sure the distance between the cook top and the bottom of the hood is within 28" and 32" in range.
- Reduce the number of elbows and length of duct work. Check if all joints are properly connected, sealed, and taped.
- Make sure the power is on high speed for heavy cooking.
- The wind from the opened window or open doors in the surrounding area are affecting the ventilation of the hood. Close all the windows and doors to eliminate the outside wind flow.
- Check weather the direction of duct opening is against the wind, if so then adjust the duct opening direction.
- Check weather using the wrong size of ducting.

6. The light does not work:

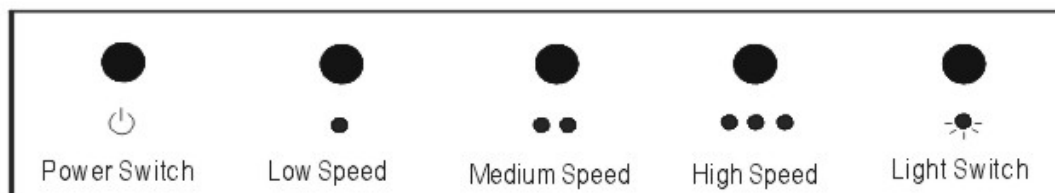
- Check weather the light bulb is loose, if so tighten the light bulb.
- Swap out light assembly to working ones to determine weather it is caused by defective light bulbs.

7. Wiring Diagram



NOTE: For all other inquiries, please contact us.

J. RANGE HOOD OPERATIONS



TURN ON:

- Press the speed control switch (Low Speed, Medium Speed, High Speed) to select the desired level of power. Once button is pressed, the previous speed mode will be cancel.
- Press Light Switch to turn on the lights.

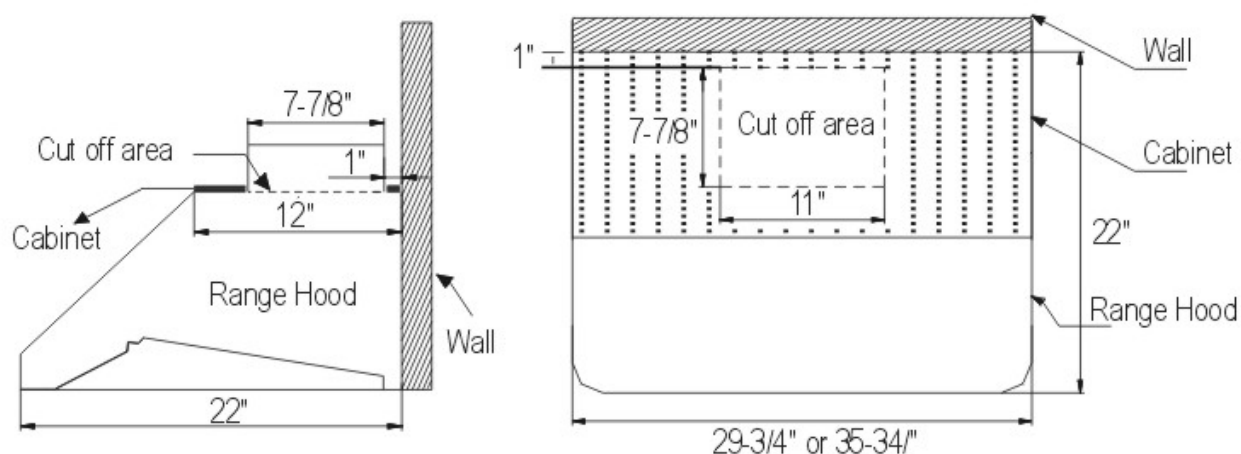
TURN OFF:

- Press the Power Switch to turn off the power.
- Press Light Switch to turn off the lights.

K. MEASUREMENTS OF RANGE HOOD

WARNING : MAKE SURE ALL MEASUREMENT IS CORRECT BEFORE MAKING ANY CUTTING.

A. Measurement for suggest cut off area on cabinet.



B. Measurement of range hood

